

G-1

GreenPla Identification System

April 2000 (1st Edition)

June 2007 (Revised)

Japan BioPlastics Association

Preface

The GreenPla Identification System is a system under which GreenPla (products) that meet the identification standards prescribed by the Japan BioPlastics Association (hereafter referred to as the JBPA) are authorized to use the GreenPla logo (specified separately by the JBPA), in order to ensure that ordinary consumers can easily identify GreenPla.

The term GreenPla as used here refers to materials or products that include in their components biodegradable organic materials that are broken down by the action of microorganisms in the natural environment and which ultimately become carbon dioxide or water. The JBPA's identification system has the objective of creating greater understanding of GreenPla among ordinary consumers, ensuring that an awareness of their proper use becomes widespread, and promoting the popularization of GreenPla (products).

[Explanation of Terms]

- **GreenPla** The generic term for biodegradable plastics, raw materials such as pellets that contain as their main component biodegradable plastics, and GreenPla products such as films and molded products that conform to the identification standards prescribed by the JBPA, with the total amount of biodegradable plastic (PL Category A) and natural organic materials like cellulose (PL Category B-8) accounting for at least 50.0% of the weight of the product or at least 50.0% of the volume of the product.
- **Products** Items traded and used, and which are generally recognized as being made from plastic.
- **Materials** Items used to produce a product and which exist in that product.
However, in the case of products made using a manufacturing technique that uses chemical reactions, these reaction products are also classified as materials.
- **Components** Materials consisting of single substances.
- **Inorganic materials (components)**
Materials and components made solely from inorganic substances.
Natural inorganic materials: Inorganic materials that are natural substances and have only undergone physical handling.
Synthesized inorganic materials: Inorganic materials that have undergone chemical handling in their synthesis.
- **Organic materials (components)**
Materials and components other than inorganic materials (components).
Natural organic materials (compounds): Organic materials that are materials or components that exist naturally.
- **Positive list (PL)**
A list of materials and components that have been deemed to be appropriate substances from which to produce products that conform to the requirements for green plastics.

- **Logo** An identification logo awarded to GreenPla accredited by the JBPA.

1. Identification Standards

- (1) All of the constituent materials (components) of GreenPla must be on the JBPA's positive list (hereafter referred to as the PL).
- (2) GreenPla must satisfy the JBPA's standards for inclusion on the PL.
- (3) All of the constituent materials (components) of GreenPla must, as a general rule, be disclosed to the JBPA's Identification Committee (hereafter referred to as "this committee").
- (4) In GreenPla, biodegradable organic materials (the total amount of biodegradable plastic (PL Category A) and natural organic materials (PL Category B-8) must account for at least 50.0% of the weight of the product or at least 50.0% of the volume of the product.
- (5) The quantity of specified elements in GreenPla must not exceed the upper limits specified in Appendix 1.
- (6) If composite products consisting of GreenPla and materials not registered on the PL satisfy Item 5 "Standards for Acceptance of Use of the Logo on Limited Parts", use of the logo may be permitted on the GreenPla part.
- (7) If identifying a substance as GreenPla, the registration number must, as a general rule, be quoted.
- (8) GreenPla products displaying the "Compostable" label on the GreenPla logo must also meet the "Standards for Compostable GreenPla Products" (revised in September 2004) prescribed by the JBPA.
- (9) GreenPla products displaying the "Biomass-derived" label on the GreenPla logo must also conform to "Concerning the Method of Labeling GreenPla Products as 'Biomass-derived'" prescribed by the JBPA.
- (10) This committee's operational criteria must be adhered to in the identification of GreenPla.

Reference

CEN/TC261/SC4/WG2 N: Requirements for packaging recoverable through composting and biodegradation - Test scheme and evaluation criteria for the final acceptance of packaging
1950 Ministry of Agriculture and Forestry Bulletin No.177 (Special Fertilizers Based on the Fertilizer Law)

1991 Environment Agency Bulletin No.46 "Environmental Standards Concerning Soil Pollution" (Soil on Agricultural Land)

1973 General Administrative Agency Regulations "General Administrative Agency Regulations Stipulating Criteria Concerning Industrial Waste Containing Metals, etc."

Appendix 1 Upper Limits for Content of Specified Elements

Element	Upper Limit for Content in Products (ppm)	Element	Upper Limit for Content in Products (ppm)
Cadmium (Cd)	0.5	Selenium (Se)	0.75
Lead (Pb)	50.0	Nickel (Ni)	25.0
Chromium (Cr)	50.0	Zinc (Zn)	150.0
Arsenic (As)	3.5	Molybdenum (Mo)	1.0
Mercury (Hg)	0.5	Fluorine (F)	100.0
Copper (Cu)	37.5		

Note: Chemical assay values for specified elements contained in GreenPla must be either measured values obtained using an analytical method with a valid degree of accuracy or estimated values obtained on the basis of reasonable grounds. The usual chemical assay methods are those that employ atomic absorption, fluorescent X-rays or absorption spectroscopy; if other measuring methods are used, materials providing a brief overview of their method of operation shall be appended to the application form.

2. Standards for the Operation of the Logo

- (1) The decision of this committee with regard to the identification of GreenPla will be final. Those wishing to use the logo must comply with the instructions of this committee regarding the identification of the relevant GreenPla.
- (2) Those wishing to use the logo must submit an application form to provide this committee with advance notification of the usage details and obtain permission to use the logo.
- (3) Those who have received permission to use the logo must submit the relevant product to this committee.
- (4) The period of validity for use of the logo is three years from the date on which permission to use it is granted. However, this does not apply if an application to continue using the symbol is made during the period of validity.
- (5) If the usage details relating to the logo change, advance notification of the details of the change must be submitted to this committee.
- (6) If the details of the composition (components, configuration) of the GreenPla have changed and, as a result, differ from the content of the product that has been authorized by this committee to use the logo, use of the logo on the product concerned must be suspended immediately. However, this does not apply if a new application is submitted for permission to use the logo, providing the details of the change in advance, or this committee is contacted with these details in advance and its approval secured.
- (7) If questions arise regarding the use of the logo, this committee should be consulted and its instructions provided.
- (8) If it is recognized that a question has arising regarding the content of matters recorded in the documentation introducing products on the market that have secured approval to use the logo, the party that submitted the application regarding the relevant product is required to respond to inquiries from the Logo Management Subcommittee within three months and is obliged to clear up any questions raised.
- (9) In relation to the previous item, if a response is not received within three months, the Logo Management Subcommittee may invalidate the relevant company's license to use the logo. In this case, this committee will notify the logo user of the revoking of its permit to use the logo and publish this fact on the website of the JBPA.
- (10) All other matters relating to the use of the logo are the responsibility of the party that has received permission to use the logo.
- (11) In the event that an applicant resigns its membership of this association, its permission to use the logo will be invalidated from the date on which it cancels its membership. This committee will publish this fact on the website of the JBPA.

3. Applications to Use the Symbol

- (1) Those wishing to receive permission to use the logo for the first time, or wishing to change the content of the application regarding a product that has already acquired the right to use the logo, must submit an application that complies with this committee's identification standards and operational standards.
- (2) JBPA regular members, supporting members and mark members (including time-limited mark members) can apply to use the symbol in line with the following requirements.
 - i) All constituent materials (components) of the GreenPla for which the application is being submitted shall be specified on the application form (Form X-1), along with the quantities thereof. Please place a circle in the remarks column concerning the main biodegradable plastic. If the item uses multiple biodegradable plastics, the biodegradable plastic that accounts for the greatest quantity shall be classed as the main biodegradable plastic.
 - ii) The main biodegradable plastic will be listed on the GreenPla product database and published on the JBPA website, etc.
 - iii) The measured values or rationally estimated values of specified toxic substances (Appendix 1) contained in the GreenPla for which the application is being submitted shall be specified on the application form (Form X-1). If providing measured values, an analytical report detailing such matters as the method of measuring the content shall be appended; if providing estimated values, the rational grounds for these shall be clearly demonstrated.

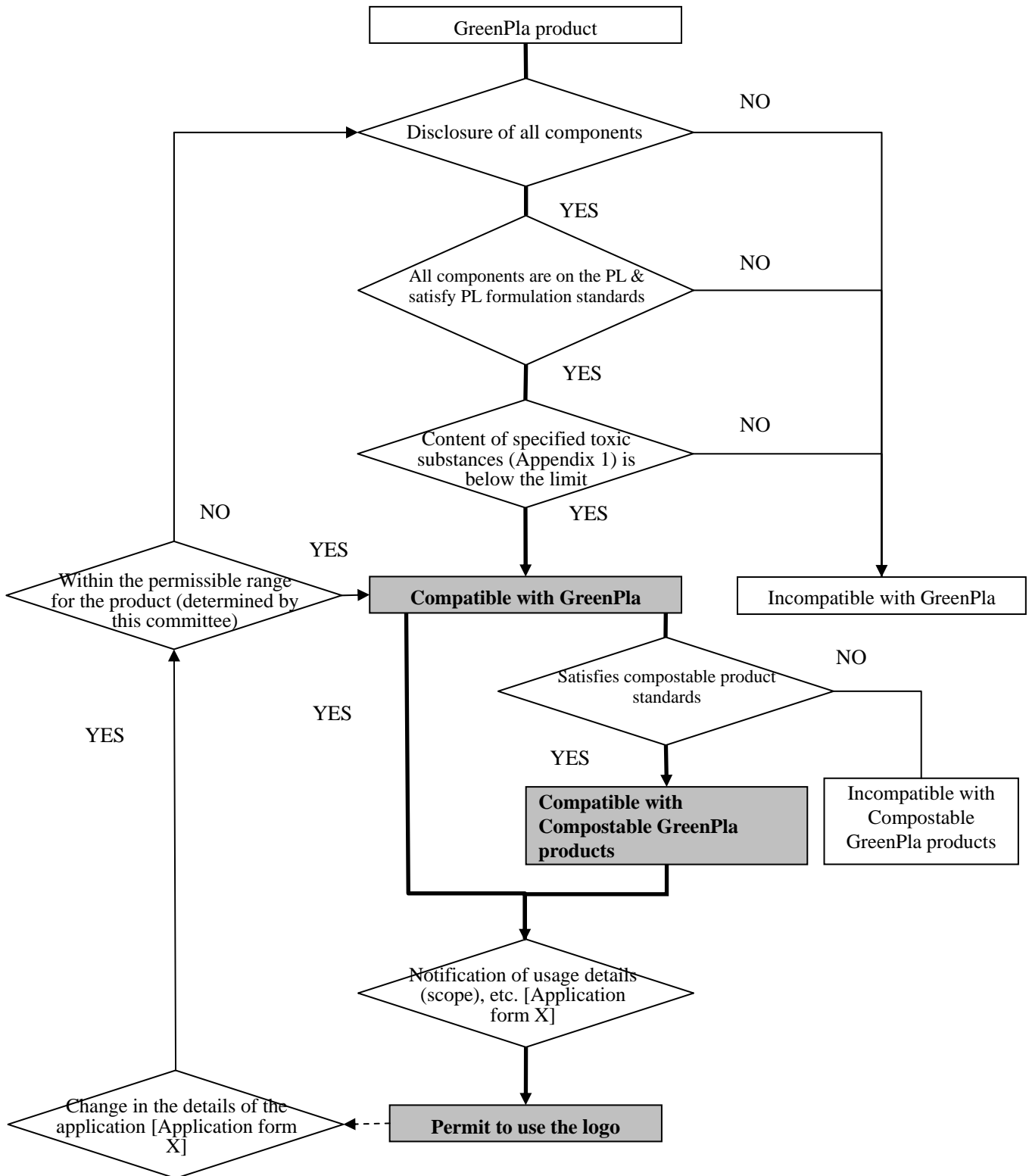
Note: If no measured values for specified toxic substances are available at the time of the application to use the logo, it is possible to apply after consulting this committee (provisional measure).
 - iv) If there are any special notes concerning the method of forming (processing) the GreenPla for which the application is being submitted, these shall be stipulated on the application form (Form X-1).
 - v) Details concerning the use and scope of use shall be stipulated on the application form (Form X-1).
 - vi) The applicant shall attach the materials requested in ii) to the application form (Form X-1) and submit it to this committee along with a sample of the GreenPla for which the application is being submitted.
 - vii) The results of the screening process will be notified to the applicant by means of a license to use the symbol issued by this committee (or, in the event that permission is denied, the reasons for denial will be stipulated).
- (3) The application form, appended documents and submitted GreenPla will be stored by this committee under the strictest security, and confidentiality relating to the content of the application will be strictly observed. However, GreenPla (product names) that use the logo may be introduced on the JBPA website.

Reference

Annex materials Form X-1

4. GreenPla Compatible with Identification

The question of whether or not GreenPla is compatible with identification by this committee will be ascertained by means of the following flow chart.



5. Standards for Acceptance of Use of the Symbol on Limited Parts

Composite products consisting of GreenPla and materials not registered on the PL that satisfy the following conditions shall be permitted to use the logo, but only on the GreenPla part.

- (1) In the case of composite products that contain materials that are not registered on the PL but are generally deemed to be biodegradable (it is necessary for the applicant to provide a rational explanation concerning the biodegradability), where it is easy to identify the biodegradable plastic part, the use of the logo on the biodegradable plastic part will be permitted.

Those permitted to use the logo must indicate the part to which the logo applies (or does not apply). Moreover, those permitted to use the logo are also responsible for the safety and biodegradability of the parts to which the logo does not apply.

- (2) Even if the composite product contains non-biodegradable materials, use of the logo on the biodegradable plastic part will be permitted, where it is easy to distinguish the biodegradable plastic part from the part made from non-biodegradable materials and to physically separate the two. When applying, the applicant must prove that identification and separation are easy.

Those permitted to use the logo must indicate the part to which the logo applies (or does not apply).